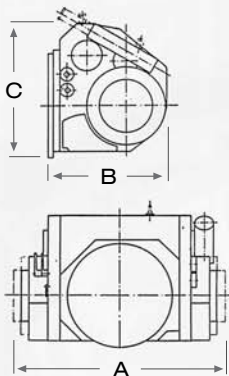
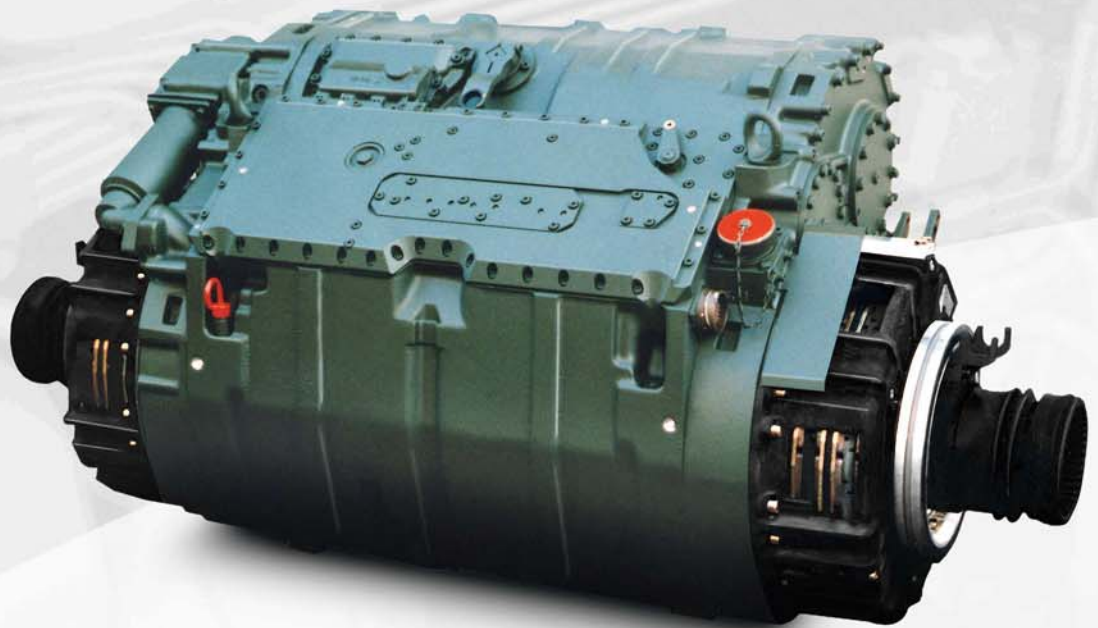


# HSWL 096

RENK HSWL 096  
for 20t class tracked vehicles  
Power Range 150 - 300 kW

The HSWL 096 is a fully digital controlled, latest technology six speed transmission for 20 ton class vehicles. A combined hydraulic/mechanic brake system features high brake effort with long service intervals. The infinitely variable superimposed steering system assists the driver to focus on mission objectives.



Dimensions (AxBxC)	1,010 x 615 x 676 mm
Maximum engine power	300 kW (400 HP)
Vehicle weight, typical	20t class
Power shift transmission	6 speed forward 6 speed reverse
Overall ratio mechanical	6.25
Stall torque ratio	2.5
Transmission weight (dry)	800 kg
Brake system	high performance hydraulic/mechanic

## Technical Characteristics

- Direction of output shaft rotation forward/reverse is freely selectable
- Front or rear vehicle installation
- Powerpack design
- Manual and fully automatic power shifting with electrical remote control
- Mechanical emergency gear shift system
- Torque converter with automatic lock-up clutch
- Infinitely variable hydrostatic superimposed steering system
- Pivot turn and neutral turn around the vertical vehicle axis at infinitely variable speed
- Hydrodynamic/mechanical dual circuit integrated brake system
- Service and parking brake
- Primary side retarder for sustained braking action
- Power-take-off
- Engine can be started by towing the vehicle

## Reference Vehicles



Vehicle Family MARS 15



APC BMP3

The transmission is suitable for:

- Vehicle Family M113
- Vehicle Family MARS 15
- Light Main Battle Tank M42/M41
- Armoured Personal Carrier BMP3



RENK Aktiengesellschaft  
Gögginger Straße 73  
D-86159 Augsburg

Phone: +49 (821) 57 00-557

Fax: +49 (821) 57 00-595

E-Mail: [Finfo@renk.biz](mailto:Finfo@renk.biz)

Internet: [www.renk.biz](http://www.renk.biz)

RENK is a member of the MAN group