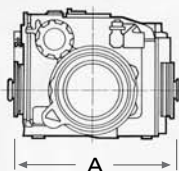
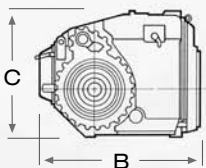
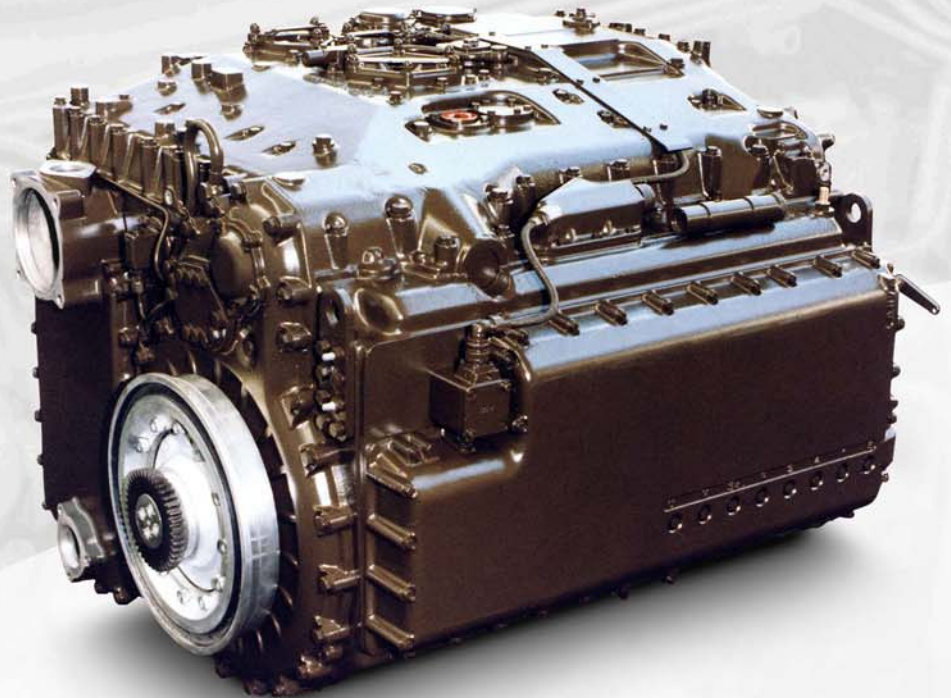


HSWL 204

RENK HSWL 204
for 30t class tracked vehicles
Power Range 500 - 600 kW

A four speed transmission for light tanks and infantry carriers with excellent characteristics. It is a reinforced HSWL 194 to accept higher engine power and vehicle weights.



Dimensions (AxBxC)	1,330 x 815 x 1,030 mm
Maximum engine power	600 kW (800 HP)
Vehicle weight, typical	30t class
Power shift transmission	4 speed forward 4 speed reverse
Overall ratio mechanical	4.3
Stall torque ratio	2.7
Transmission weight (dry)	1,250 kg
Brake system	primary retarder

Technical Characteristics

- Direction of output shaft rotation forward/reverse is freely selectable
- Front or rear vehicle installation
- Powerpack design
- Manual and fully automatic power shifting with electrical remote control
- Mechanical emergency gear shift system
- Torque converter with automatic lock-up clutch
- Infinitely variable hydrostatic superimposed steering system
- Pivot turn and neutral turn around the vertical vehicle axis at infinitely variable speed
- Primary side retarder for sustained braking action
- Power-take-off
- Engine can be started by towing the vehicle

Reference Vehicles



Light MBT TAM



APC VCTPA

- Light Main Battle Tank TAM (31t, Argentina)
- Armoured Personal Carrier VCTPA (35t, Argentina)



RENK Aktiengesellschaft
Gögginger Straße 73
D-86159 Augsburg

Phone: +49 (821) 57 00-557

Fax: +49 (821) 57 00-595

E-Mail: Finfo@renk.biz

Internet: www.renk.biz

RENK is a member of the MAN group