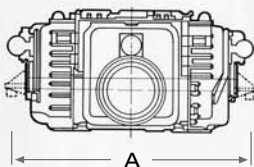
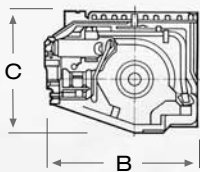
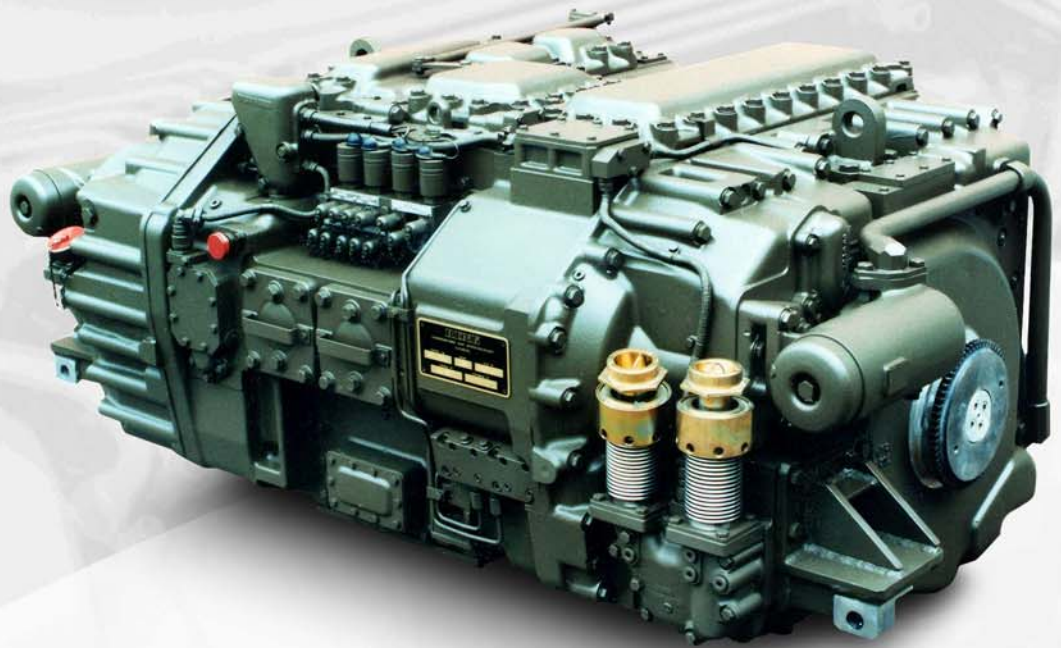


HSWL 224

RENK HSWL 224
for 45t class tracked vehicles
Power Range 500 - 600 kW

This transmission is suitable for medium weight main battle tanks and similar vehicles such as the French AMX 30, featuring four speeds in forward and reverse.



Dimensions (AxBxC)	1,460 x 929 x 740 mm
Maximum engine power	600 kW (800 HP)
Vehicle weight, typical	45t class
Power shift transmission	4 speed forward 4 speed reverse
Overall ratio mechanical	4.8
Stall torque ratio	2.5
Transmission weight (dry)	1,350 kg
Brake system	primary retarder

Technical Characteristics

- Direction of output shaft rotation forward/reverse is freely selectable
- Front or rear vehicle installation
- Powerpack design
- Manual and fully automatic power shifting with electrical remote control
- Mechanical emergency gear shift system
- Torque converter with automatic lock-up clutch
- Infinitely variable hydrostatic superimposed steering system
- Pivot turn and neutral turn around the vertical vehicle axis at infinitely variable speed
- Hydrodynamic/mechanical dual circuit integrated brake system
- Primary side retarder for sustained braking action
- Power-take-off
- Engine can be started by towing the vehicle

Reference Vehicles



MBT AMX 30

- Main Battle Tank AMX 30 (36t, Demoversion)
- Main Battle Tank AMX 32 (40t, Demoversion)



MBT AMX 32



RENK Aktiengesellschaft
Gögginger Straße 73
D-86159 Augsburg

Phone: +49 (821) 57 00-557

Fax: +49 (821) 57 00-595

E-Mail: Finfo@renk.biz

Internet: www.renk.biz

RENK is a member of the MAN group